



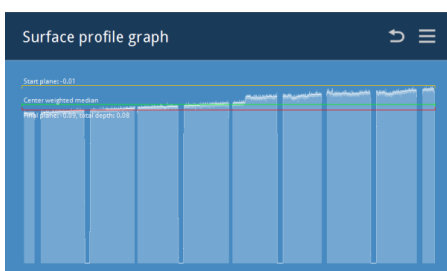
# RP1400

## CNC Head and block resurfacer

The RP1400 CNC is a resurfacing machine for cylinder heads and engine blocks of cars and trucks, as well as for all flat surfaces requiring maximum accuracy of the contact surfaces. The construction technology combines highly innovative solutions, such as the brushless motor for the automatic and precise positioning of the milling cutter plate - that is controlled by the CNC - with tested technologies, like the linear guides and recirculating-ball feed screws. The axes and the rotation speed of the milling cutter are controlled by an inverter. It is possible to monitor the feed speed. The control panel is an industrial touch screen, equipped with a simple and intuitive programme. The RP1400 CNC can be supplied with a milling cutter plate with tool-holder of CBN-PCD with a diameter of 405mm to resurface cast iron or aluminum surfaces. For heads with pre-chambers, you can use a special tool to ensure a perfect finishing.

The RP1400 CNC is defined as the "Smart Resurfer", thanks to its laser sensor that scans the cylinder-head surfaces, thus recording their profile and automating milling operations.

Images may show the product equipped with optional accessories



| Program         |               | Aluminum              |                           |
|-----------------|---------------|-----------------------|---------------------------|
| Total depth, mm | 0.08          | Scan surface          | Rough steps               |
| Start, mm       | -0.01         | View surface          | Rough step depth, mm      |
| End, mm         | -0.09         |                       | Last rough step depth, mm |
|                 |               |                       | Final step depth, mm      |
| Smoother scale  |               |                       |                           |
| Rough           | Medium        | Precise               | Custom                    |
| Distance sensor | Head position | Perform all the steps | Run step by step          |
| 0.70 mm         | 0.64 mm       |                       | Cancel                    |

## Standard equipment

Table and head feed with recirculating-ball screw  
Ø 405 mm milling plate with CBN insert  
Touch screen CNC control panel  
Laser sensor for scanning workpiece  
Surface profile graph  
Fully automatic cycle  
Database with preloaded working cycles and possibility to customise them  
Estimated cycle time  
Safety guard with sliding doors  
PV0160 Pair of parallel supports  
PV0021 Large clamps (2 pcs.)  
PV0022 Small clamps (4 pcs.)  
Lubricant for slides  
Wrench set  
Instruction manual

## Specifications

Table travel: 1410 mm  
Max working length: 1195 mm  
Max working width: 405 mm  
Min - Max working height: 170÷690 mm  
Useful table surface: 1100x335 mm  
Milling cutter diameter: 405 mm (16")  
Spindle rotation speed: 300÷1200 RPM  
Variable table feed speed: 0÷1500 mm/min  
Spindle motor: 2,2 kW  
Table motor: 0.75 kW  
Feed torque motor: 1.27 Nm  
Dimensions (LxWxH): 2500x1000x1900 mm  
Weight: 1410 kg

## Accessories

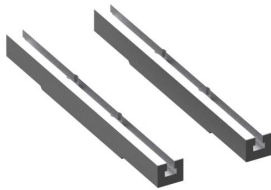
PVA015



Adjustable universal fixture with parallels

PV0007

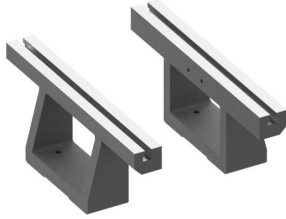
PV0007 Pair of parallel supports H=49mm



PV0015

Adjustable universal fixture with mounting plate





PV0160

PV0160 Pair of parallel supports



UT1320

3/8" CBN/PCD insert tool holder



UT1355

1/2" CBN Insert for cast iron



UT1356

1/2" PCD Insert for aluminium



UT1390

ALP insert tool holder for UT1392



UT1392

ALP insert for aluminum with prechambers

UT1330

1/2" CBN/PCD insert tool holder



UT1345

3/8" CBN Insert for cast iron



UT1346

3/8" PCD Insert for aluminium



GL0400

Guide line laser sensor

