



TR420

Multipurpose brake lathe TR420

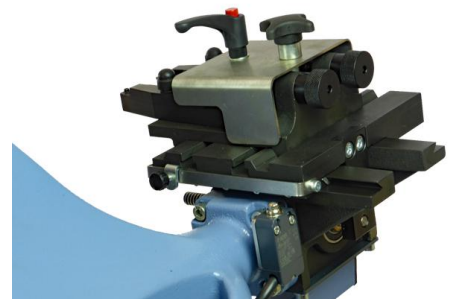
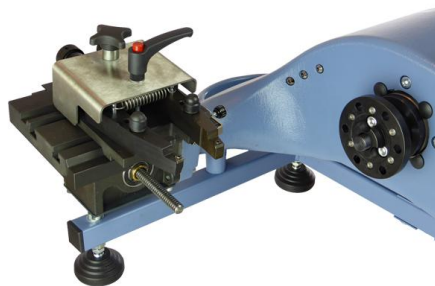
The multipurpose brake lathe mod. TR420 is designed to work on a wide range of brake lathe: cars, SUV, 4x4 vehicles and vans. It serves two purposes: the adjustment of brake discs mounted on the vehicle and of disassembled discs and drums with specific accessories.

The standard version of the TR420 includes:

- ? a self-leveling and height-adjustable trolley, which ensures a quick positioning of the lathe on the vehicle hub;
- ? three adapters for fixing wheel hubs with 4 or 5 bolts;
- ? a support base complete with feet, that allows the removing of the TR420 from its trolley so that it can be placed on every workbench.



Consulta the brochure, watch the video or contact us for any inquiry.



Standard equipment

Adjustable spindle speed
Double tool holder for discs
Insert tool holder for discs
Comparator with support
Wrench set
Instruction manual

Specifications

Min-Max disc capacity: 102-380 mm
Min-Max disc thickness: 5-45 mm
Min-Max drum capacity: 170 - 330 mm
Max drum depth: 80 mm
Carriage travel: 85 mm
Adjustable Spindle speed: 0-180 rpm
Table feed speed: 0,15 mm/rev
Spindle motor: 1,1 kW
Dimensions (LxWxH): 700x600x400 mm
Weight: 35 kg

Accessories

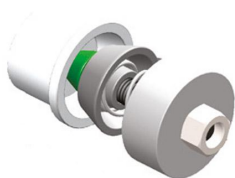
UT2829



Replacement insert for UT0028/UT0029 (10 pcs)

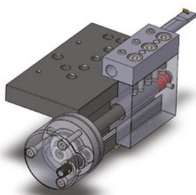
AC0420

Mounting kit for discs and drums



TT0420

Drum cutting head assembly





AA4100
4 Bolts Adapter Ring



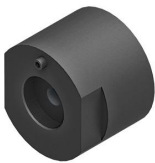
AA4120
5 Bolts Adapter Ring



AA4140
5 Bolts Adapter Ring



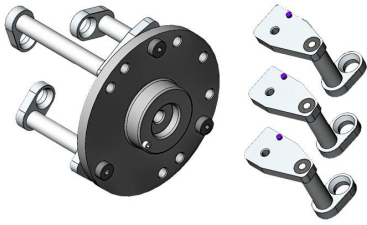
PV0094
Brake drum vibration dampener band



DS4066
Extension for large discs - 66 mm



DS4033
Extension for large discs - 33 mm



AA4000

4 and 5 bolts universal adapter ring