



TCE560

On-the-truck brake shoe lathe

The TCE560 is the perfect machine for turning brake shoes on heavy duty trucks.

The machining is operated directly on the gear unit hub axle or by using suitable accessories on conventional axles (even with mounted internal bearing).

The machine is supported by an height-adjustable, tilting and self-aligning patented carriage, which ensures quick and easy fitting operations.

The high speed rotation of 90 rpm (on both ways), together with the sequential feed of 0.6 mm/rev and the adjustable control stop, ensures short machining cycles, while providing for excellent surface finishing, cylindricity and concentricity precision.

The oversized gearmotor (1.8 kW) enables the machine to work under the hardest conditions (double or triple differential gear, transmission shaft connected, frozen oil, etc.)

The soft-start electric device controls the power, thereby starting the machine gradually with no jerks.

The standard equipment is complete with the practical reference dimension reader and the dust collector housing. Specific accessories for the centering or to simplify and speed up the manufacturing process are available upon request.



Standard equipment

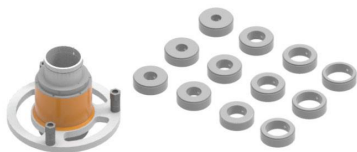
Tilting and self-aligning carriage for positioning
Adapter ring for Mercedes/Man hubs
Electronic "Soft-start" device for smooth starts
Setup of turning diameter through reference dimension reader
Double insert toolholder L=30 mm
Double insert toolholder L=50 mm
Dust collector housing
Automatic feed stop
Safety guard
Wrench set
Instruction manual

Specifications

Rotation speed: 90 rpm
Sequential feed: 0,6 mm/rev
Min turning diameter: 230 mm
Max turning diameter: 480 mm
Max brake shoe depth: 290 mm
Motor power: 2,5 Hp (1,8 kW)
Dimensions (LxWxH): 670x950x1150 mm
Weight: 160 kg

Accessories

MC5630



Hub for conventional axles and centering rings

MC5601



Equipment for conventional axles with internal mounted bearing

AC55--



Centering rings for reduction-hub axles (different types)



AC5280
Floating shoe clamping device



UT5538 / UT5558
Two-insert toolholder L=30 /50 mm



UT5508
Replacement insert for UT5538 / UT5558



AC5525
Trolley for equipment



TCE050
Heavy duty dust vacuum unit



AC5681
Toolholder zero-setter dia. 360 mm