



RG60

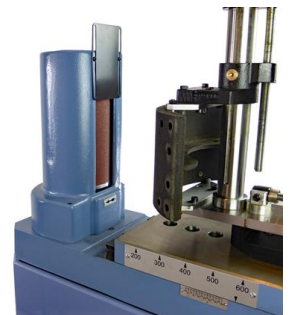
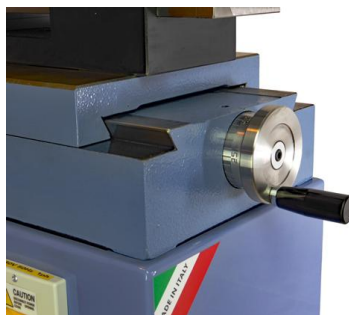
Car and truck brake shoe grinder

The RG60 is a brake shoe grinding machine for cars and commercial or industrial vehicles. It has been designed in accordance with sturdiness and accuracy criteria, which ensure the grinding of all kind of brake shoe, both floating and fixed-point types. The RG0315 clamping fixture, supplied as standard equipment, ensures a quick and accurate set-up of floating shoes, while the optional RG0300 clamping fixture is required for fixed-point types.

Moreover, the machine includes an efficient dust collector system complete with vacuvator.

Browse other Brake shoes lathe machine grinders.

Images may show the product equipped with optional accessories



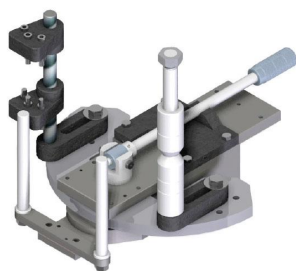
Standard equipment

Clamping fixture for floating shoes
Abrasive belt 60 grit
Dust collector system with vacuvetor
Wrench set
Instruction manual

Specifications

Min-max working diameter: 170 ÷ 700 mm
Max working height: 270 mm
Grinding roller diameter: 130 mm
Spindle motor: 1.11 kW
Rotation speed: 2800 rpm
Dimensions (LxWxH): 800x300x850 mm
Weight: 136 kg

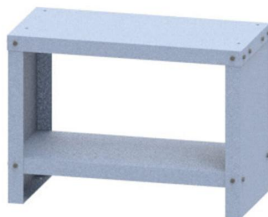
Accessories



RG0300
Clamping fixture for fixed brake shoes



RG6050
Vacuum unit



RG0100
Base cabinet