



TR1000+ CPS150

Brake disc and drum lathe

TR 1000 is a heavy duty brake drum lathe for cars and trucks particularly indicate to those mechanics who are seeking for a reliable product of quality and easy to use at a reasonable price. In fact it has been designed on the experience of the model TR 1500 but removing all those attachments not needed to some kind of users; however such devices are available, on demand, as optional equipment like the shaft support arm for twin wheel machining (CPS150) or the powered cross slide feed for disc turning (TR1996).

The main features of TR 1000 are the structural reliability granted by the wide use of cast iron for all composing machine parts as basement, tables and lathe unit box, and the easiness to use thanks to few and intuitive commands conveniently located that allow all adjustments in order to always obtain best result of accuracy and finishing.



Standard equipment

Boring bar support
Boring bar for large drums
Large drum turning tool
Safety guard
Truck drum silencer band
Ø 50 mm shaft with nut and spanner
Spaces
Centring cones
Wrench set
instruction manual

Specifications

Min-Max drum turning diameter:
150÷1170 mm
Min-Max disc turning diameter: 0÷855 mm
Longitudinal table travel: 410 mm
Cross slide travel: 145 mm
Spindle rotation speed: 30÷120 rpm
Longitudinal table feed: 0÷30 mm/min.
Cross slide feed (option): 0÷30 mm/min.
Spindle motor power: 1.5 kW
Table motor power: 0.07 kW
Dimensions (LxWxH): 1300x950x1450h
Weight: 655 kg

Accessories

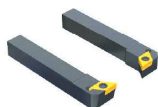
UT0012

Replacement insert for UT0011, UT5008 and UT5009 (10 pcs.)



UT5008 / UT5009

Right (UT5008) and left (UT5009) hand L shaped insert tool holder



AC0180/3

Adapter plates for hubless brake drums





AC1188

Universal adapter plate for hubless brake drum



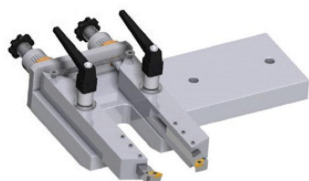
TDL30

Light disc and drum centering adapter set



VPD18

small disc & drum adapter set arbor - Ø 18 mm



TR0996

Double adjustable tool holder



UT0015

Truck drum insert tool



PV0060

Grinding drums



PV1250

Arm crane for drum lifting