



RP1300

Head and block resurfacer

The RP1300 is a resurfacing machine designed for cylinder heads and blocks of cars and trucks but also for all those flat surfaces that require an extremely precised side contact.

This model combines tested solutions, such as the flat and V-shaped lubricated slides on the base (which guarantee an excellent run fluidity), with other more innovative features, like the table feed through a recirculating-ball screw with a wide range of regulation or an inverter for the spindle speed regulation. Moreover, RP1300 has an efficient cooling system consisting in a tank on wheels and a grinding wheel dresser. For a convenient and safe use of the machine, all control commands are located on a swing arm control panel adaptable to every operator;

The standard version includes, a segmented grinding wheel for cast iron or aluminium and pre-chamber cylinder head resurfacing and brazed tool for aluminium machining. Available as optional a CBN-PCD toolholder plate for the reconditioning at high speed of cast iron and aliminium heads

Consult the brochure or contact us for more information.



Standard equipment

- Adjustable table speed with recirculating-ball screw
- Segmented grinding wheel complete with abrasive sectors for cast iron (10 pcs.)
- Splash and safety guard
- Fast motorized head feed
- Cooling system complete with pump
- Settling tank
- Abrasive sector dresser
- RTV099 Starwheel dresser
- UT0003 Head resurfacing tool
- PV0160 Pair of parallel supports
- PV0021 Large clamps (2 pcs.)
- PV0022 Small clamps (4 pcs.)
- Lubricant for slides
- Emulsifiable liquid
- Wrench set
- Instruction manual

Specifications

- Table travel: 1400 mm
- Maximum working length: 1225 mm
- Maximum working width: 355 mm (405 mm Optional)
- Maximum working height: 740 mm
- Useful table surface: 920x230 mm
- Grinding wheel diameter: 355 mm (405 mm Optional)
- Spindle rotation speed: 300÷1500 RPM
- Adjustable table feed speed: 0÷1500 mm/min
- Spindle motor: 4.0 kW
- Table motoreductor: 0.75 kW
- Rapid feed motor: 0.5 kW
- Cooling pump motor: 0.25 kW
- Dimensions (LxLxH): 2180x1280x2000 mm
- Weight: 1410 kg

Accessories

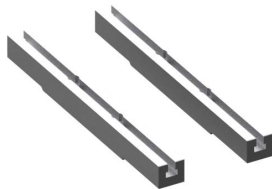
PVA015



Adjustable universal fixture with parallels

PV0007

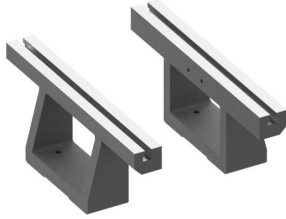
PV0007 Pair of parallel supports H=49mm



PV0015

Adjustable universal fixture with mounting plate





PV0160

PV0160 Pair of parallel supports



PL000A

Motor driven rotary table



RP1361

CBN/PCD/ALP Milling plate dia. 355 mm (14")



UT0018

Aluminum with Pre-chamber insert tool holder



UT0023

3/8" CBN/PCD insert tool holder



UT0017

Insert tool holder with UT0014

UT0014



Replacement insert for UT0017 (10 pcs)

UT1355

1/2" CBN Insert for cast iron



UT1356

1/2" PCD Insert for aluminium



UT0003

Head resurfacing tool



UT1330

1/2" Insert tool holder for UT1355 (CBN), UT1356 (PCD)



RP1364

Dimensions 410 mm (16") 1/2" CBN or PCD milling plate



PSC130

Splash and safety guard with sliding doors



UT1320

3/8" CBN/PCD insert tool holder

