



# TD502

## On-the-truck disc lathe

The TD 502 machine completely changes the concept of disc reconditioning in trucks and buses.

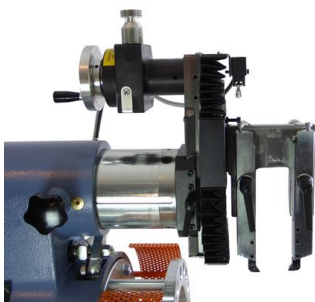
No more time loss while disassembling the disc for bench turning. Now machining operations can be done directly on the hub.

This revolutionary idea has led to the creation of a machine that minimizes the set-up time.

It is mounted on a swinging and height-adjustable self-aligning saddle that always guarantees the perfect matching between the machine and the hub (with no need for further alignment or centering operations with a comparator). The monolithic cast iron machine body has an empty central part that does not interfere with the truck reducer (especially on rear axles). This ensures that the machine positioning is very close to the disc, for a much more precise reconditioning operation.

Furthermore, the intermittent and adjustable feed ensures a precise finishing on any surface.

Images may show the product equipped with optional accessories



## Standard equipment

Tilting and self-aligning saddle  
Right-end L shaped toolholder UT5008  
Left-end L shaped toolholder UT5009  
AA0251 Adapter ring  
Wrench set  
Instruction manual

## Specifications

Min-Max working diameter: 100 Å· 500 mm  
Max disc thickness: 70 mm  
Max working width: 150 mm  
Rotation speed: 70 rpm  
Variable intermittent feed: 0 Å· 0,3 mm/rev  
Motor power: 2 Hp (1,5 kW)  
Dimensions (LxWxH): 850x650x1050 mm  
Weight: 232 kg

## Accessories

UT0012

Replacement insert for UT0011, UT5008 and UT5009 (10 pcs.)



AA0251

10 Bolts Adaptor Ø: PCD 335 mm./Centering 281 mm



AA0056

6 Bolts Adaptor Ø: PCD 170 mm/Centering 130 mm



AA0061

8 Bolts Adaptor Ø: PCD 275 mm/Centering 221 mm



AA0265

6 Bolts Adaptor Ø: PCD 205 mm/Centering 161 mm



AA0275

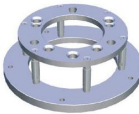
6 Bolts Adaptor Ø: PCD 245 mm/Centering 202 mm



AA0077

5 Bolts Adaptor Ø: PCD 203 mm/Centering 164 mm

6 Bolts Adaptor Ø: PCD 202 mm



TD5026

Dial gauge for alignment



AA0078

5 fori Ø: interasse 130 mm/centraggio 85 mm

5 fori Ø: interasse 118 mm (centraggio con dadi conici)



UT5008 / UT5009



Right (UT5008) and left (UT5009) hand L shaped insert tool holder

TD5027



Soft-Starter with inverter

MNF502



Single phase version with inverter and adjustable rotation speed