



RSM240

Rim straightening machine and lathe

RSM 240 is designed and manufactured to repair by straightening all kind of steel, aluminium and alloy wheels with range diameter between 12" and 24".

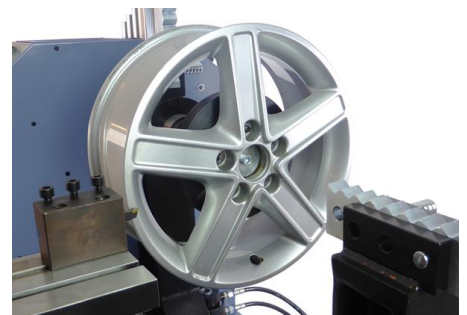
The system uses an easy to handle hydraulic cylinder actuated by an hydraulic unit that, conveniently positioned, pushes on the damaged part of the rim taking it back to the original shape. Such operation is made easier with the aid of a wide set of shaped punches that perfectly lean to the different rim profiles. Furthermore the hydraulic cylinder is provided by a pressure regulation system with manometer (PRP100) which allows the adjustment of push force in accordance to the material on work.

RSM 240 moreover is equipped with a lathe unit that allows, after the wheel straightening operation, to remove dents on the edges.

Useful accessories among which the adjustable spindle speed with digital readout (VRV050) or the dial gauge for alignment (CPR150) are available according to every kind of need.

Discover more wheel straightening machines

Images may show the product equipped with optional accessories



Standard equipment

Wheel centering rings
Gauge
Angular tip
Flat tip
Square tip
Chisel tip
Extended tip holders
Rim cutting tool
Wrenchset
Instruction manual

Specifications

Application range: 13" - 24"
Max working pressure: 140 bar
Max punch force: 3950 Kg
Spindle rotation speed: 80 rpm
Hydraulic unit motor: 0,75 kW
Lathe unit motoreducer: 0,75 kW
Dimensions (LxWxH): 1100x860x1250 mm
Weigh: 350 Kg

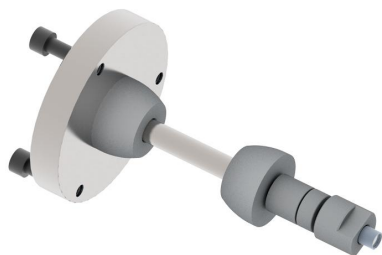
Accessories



UT0011
Rim insert tool holder



CPR150
Precision dial gauge



KCM100
Motorcycle rims mounting kit

UT0012

Replacement insert for UT0011, UT5008 and UT5009 (10 pcs.)



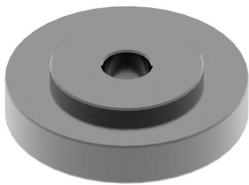
PV0096

Vibration dampener band



AC220/XX

Centering rings on demand



PVA070

Set of M12x90 mm T-Bolt screw



DCF010

Set of conical nuts for Ford rims

