



# FSV120

## Valve seat machine

The FSV120 is a boring machine for valve seats trucks engines that ensures perfect results, thanks to the working precision and extreme ease of use.

The spindle head moves on an air cushion allowing a quick and precise positioning of the tool holder head one the carbide tungsten pilot stuck into the valve guide.

The system of fixed pilot, combined with the tool head mounted on a spherical adapter, guarantees a fast and correct alignment and centering.

The double spindle advancement system offers a perfect tool feed speed, thanks to the fast front wheel and the lateral micrometric one.

The 360° pivoting fixture has a strong and rigid structure that avoids any tool vibration and increases the quality of the finish. Furthermore, the fastening of the cylinder head is extremely easy and quick, as well as the leveling done by the micrometric adjustment handwheel.

The accuracy is ensured by the electronic level display.

The machine includes in tthe standard equipment, several useful accessories such as the integrated vacuum gauge, a LED light, the storage tray wich improve functionality and usability.

Images may show the product equipped with optional accessories



## Standard equipment

Air float Work Head for light positioning  
Air pressure filter/regulator  
Universal 360 degree roll over Cylinder Head fixture  
Adjustable Clamping Kit for special cylinder heads  
Hardened spindle with taper tool holder  
Infinitely variable spindle speed  
Adjustable end stroke  
Electronic level with readout  
Cutting depth measuring dial gauge  
APM100 Ball head drive adaptor  
TH0375 Tool holder mandrel for 9,52 mm pilots  
CUT2000 insert tool holder (18-30 mm)  
CUT2001 insert tool holder (26-42 mm)  
CUT2002 insert tool holder (40-60 mm)  
TSF010 Tool setting fixture  
Vacuum tester complete with pads  
LED lighting system  
Swing arm tool storage Cabinet  
Removable Chip tray  
Wrench set  
Instruction manual

## Specifications

Max cylinder head dimensions (LxWxH): 1120x304x150 mm  
Valve seat diameter range: 14÷76 mm  
Spindle diameter: 56 mm  
Spindle taper: ISO 30  
Spindle speed (range): 0-500 RPM  
Spindle motor power: 1,5kW  
Spindle travel/Stroke vertical: 180 mm  
Work head travel horizontal-airfloat/airclamp: 1340 mm  
Work head travel: 50 mm  
Work head tilt (either side of vertical zero):  $\pm 10^\circ$   
Maximum distance from table to spindle: 473 mm  
Working air pressure: 6 bar  
Dimensions (LxWxH): 1000x1635x2210 mm  
Weight: 1100 Kg

## Accessories

UTxxxx- A

Multi-angle cutting Insert ? A style



UTxxxx- B

Multi-angle cutting Insert ? B style



MPP316

Drill chuck dia. 3÷16 mm with adapter taper ISO-30



FSV500

Tool sharpening attachment with diamond wheel



TH0375

Ball head Tool holder



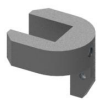
APM100

Ball Head drive adaptor



TSF010

Tool Setting Fixture



CUTxxxx

Insert holder



CPxxxx

Fixed Tapered Carbide Pilot (Standard Shank 9.52 mm - .375")

MPxxxx

Fixed Tapered Carbide Pilot (Mini Shank 6,00 mm - .236")

