



# RG60

## Car and truck brake shoe grinder

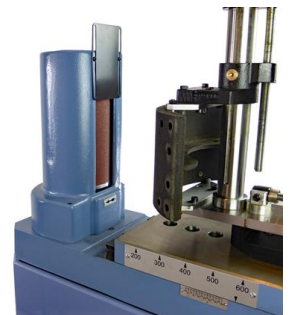
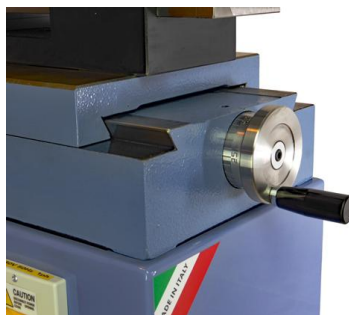
---

The RG60 is a brake shoe grinding machine for cars and commercial or industrial vehicles. It has been designed in accordance with sturdiness and accuracy criteria, which ensure the grinding of all kind of brake shoe, both floating and fixed-point types. The RG0315 clamping fixture, supplied as standard equipment, ensures a quick and accurate set-up of floating shoes, while the optional RG0300 clamping fixture is required for fixed-point types.

Moreover, the machine includes an efficient dust collector system complete with vacuvator.

Browse other Brake shoes lathe machine grinders.

Images may show the product equipped with optional accessories



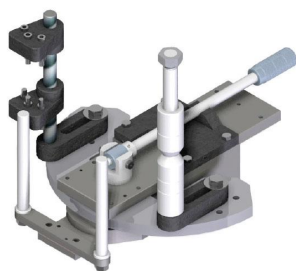
## Standard equipment

Clamping fixture for floating shoes  
Abrasive belt 60 grit  
Dust collector system with vacuvetor  
Wrench set  
Instruction manual

## Specifications

Min-max working diameter: 170 &divide; 700 mm  
Max working height: 270 mm  
Grinding roller diameter: 130 mm  
Spindle motor: 1.11 kW  
Rotation speed: 2800 rpm  
Dimensions (LxWxH): 800x300x850 mm  
Weight: 136 kg

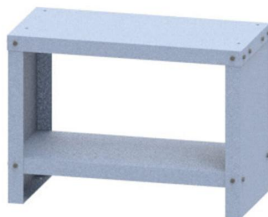
## Accessories



RG0300  
Clamping fixture for fixed brake shoes



RG6050  
Vacuum unit



RG0100  
Base cabinet